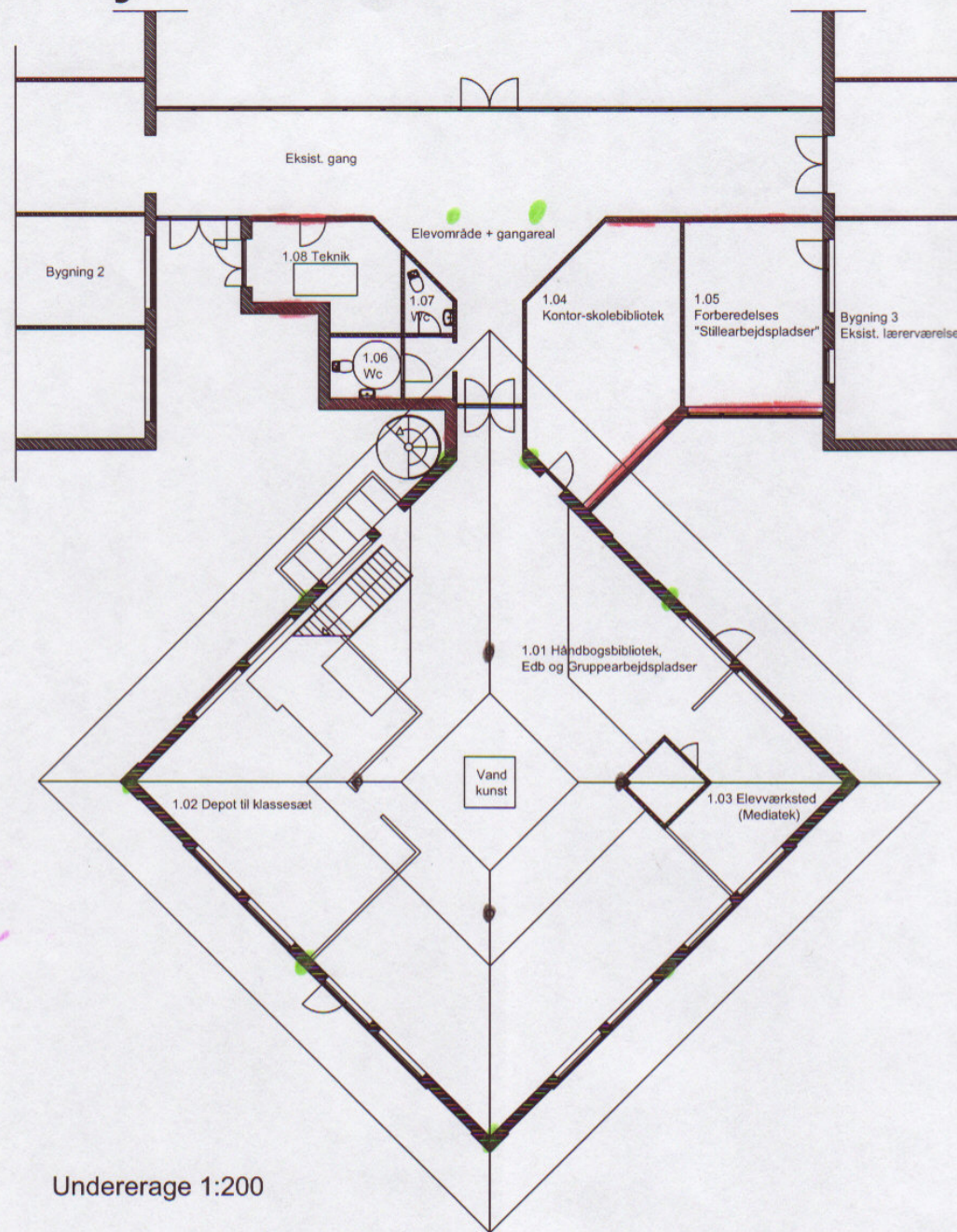
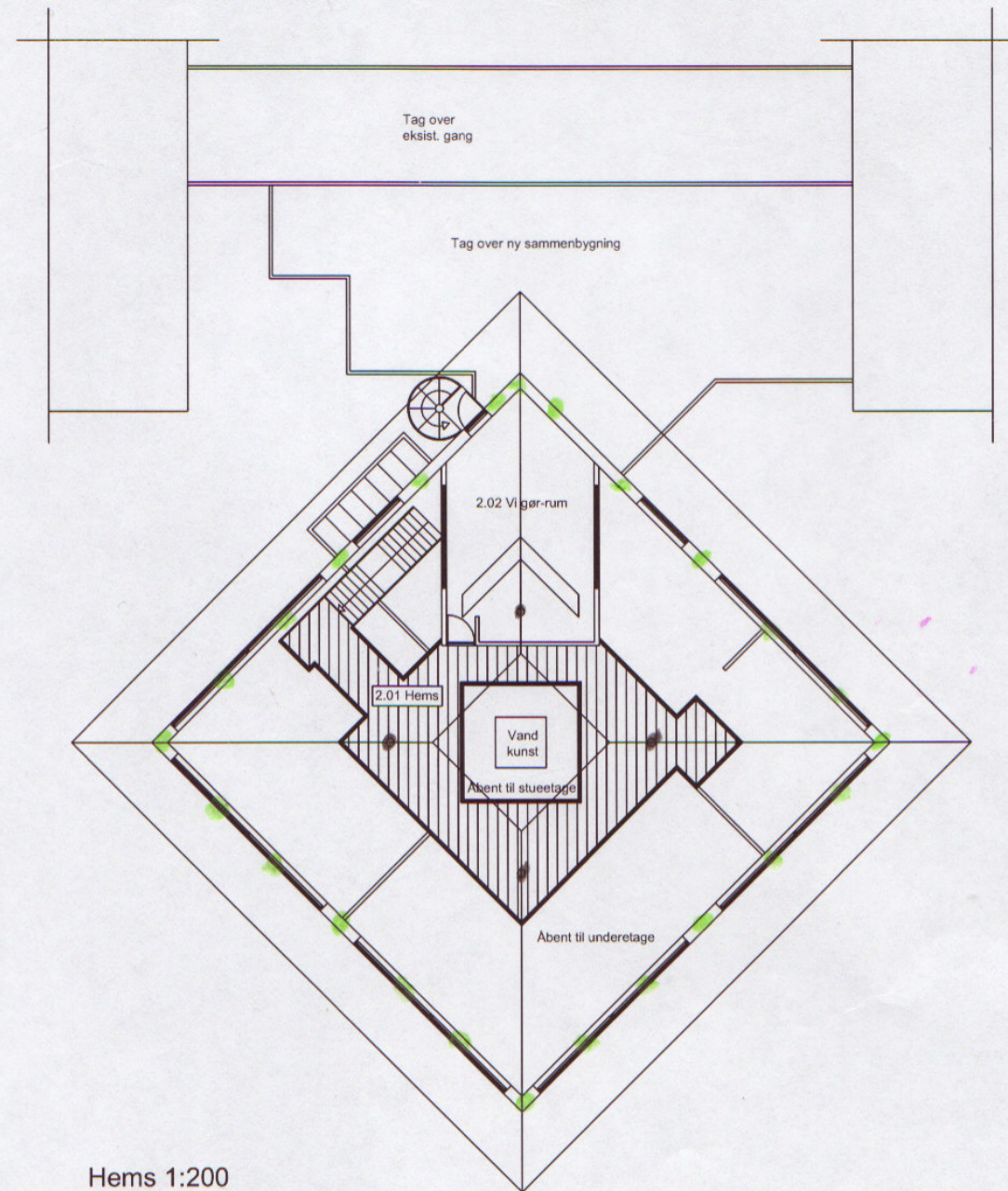


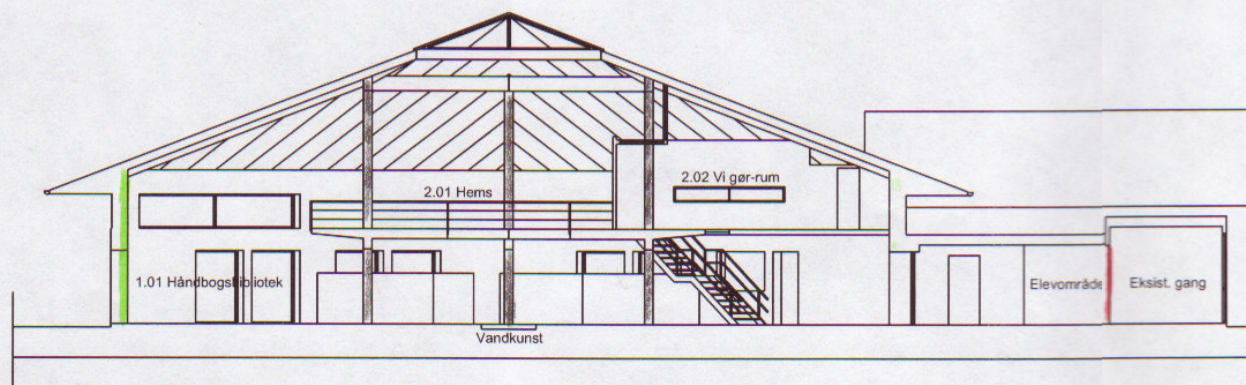
Bæranalyse







Underage 1:200



Hems 1:200



Tværsnit A-A 1:200

-  Bærende vægge
-  Ikke Bærende vægge
-  Stålsøjler
-  Træsøjler

Yder mur ved 1,01-1,03 bærer ikke tagkonstruktionen det gør stålsøjler og bjælker.